



11<sup>th</sup> November 2017

THE ULTIMATE COURSE ON PRF TECHNIQUE with the new technologies of smart blood concentrates:

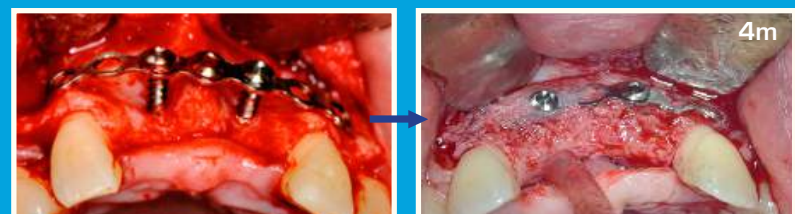
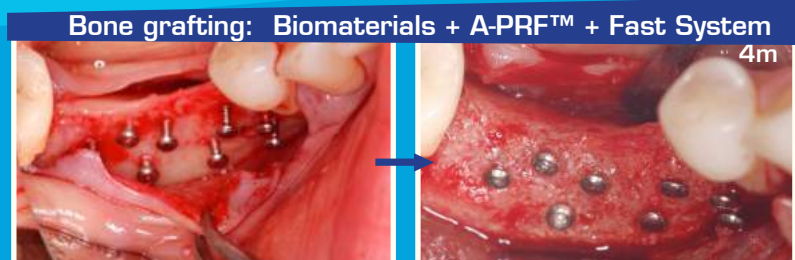
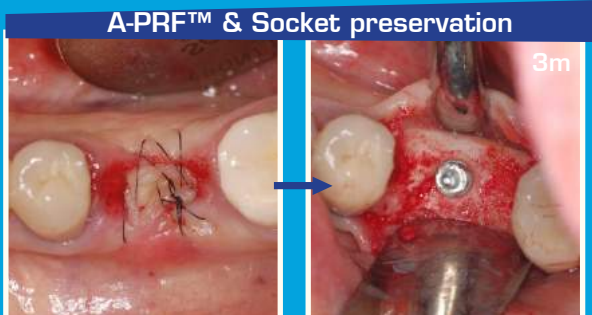


Healing improvement with new technologies Choukroun A-PRF™ and i-PRF™. Simplify your soft tissue management and bone grafts with A-PRF™ membranes. i-PRF™ : Mesenchymal Stem Cells Therapy. Bone augmentation with biomaterials: you'll finally understand how to use biomaterials and increase your success rates. And more...



A-PRF™

i-PRF™



# PROGRAM

Platelet Rich Fibrin : Advanced PRF™ & injectable-PRF™ in oral surgery

Growth factors: biology and physiology, mechanisms of action

Advanced-PRF™: More cytokines and BMPs.

injectable-PRF™: Mesenchymal stem cells therapy.

Composition and influence on tissue healing.

A-PRF™ as "matrix" in soft tissue management: protocols, clinical results

A-PRF™ as "matrix" in bone augmentation: protocols, clinical results

A-PRF™ & i-PRF™ with biomaterials: what kind of biomaterials do we have to mix with PRF?

Protocols, clinical results, new perspectives in bone reconstruction.

Factors who antagonize the PRF™:

Vit.D Level, Cholesterol, Contamination, Pressure, Tension: protocols & solutions.

+ Hands on, demo



08.00 - 08.30 : Welcome & Registration



08.30 - 10.30 : PRF : Biological Basis and Principles

10.30 - 11.00 : Coffee Break

11.00 - 12.30 : A-PRF & i-PRF : Protocols and Indications

12.30 - 13.30 : Lunch

13.30 - 15.00 : A-PRF & i-PRF : Clinical use and results

15.00 - 15.30 : Coffee Break

15.30 - 17.00 : Handling Demonstration (A-PRF & i-PRF)

17.00 - 17.30 : Discussion / Questions session



Venue : Bellevue Park Hotel Riga - Slokas iela 1, Rīga, LV-1048



Registration : online: [www.savanti.lv/prf/prf-seminar](http://www.savanti.lv/prf/prf-seminar)



Contact : Juris Erbs, +371 22023229

Registration PRF Course - Riga - 11<sup>th</sup> November 2017

REGISTRATION: 1per attendee SEND TO: SAVANTI: e-mail: [savanti@savanti.lv](mailto:savanti@savanti.lv)

Name:..... Address:.....

Tel: ..... ..

E-mail: ..... ..

Registration fee : Till 2017.08.31 dentists – 290 EUR, students – 150 EUR.  
From 2017.09.1 dentists – 350 EUR, students – 150 EUR.

Please transfer the amount on Account :

Name: SAVANTI

Bank: AS DNB bank

IBAN: LV45RIKO0002013264171

SWIFT: RIKO LV2X

Reg. No.: 40103564358

Registration is confirmed by payment on account number.